

Targeting neurons in the gastrointestinal tract to treat Parkinson's disease[☆]



Robert A. Hauser^{a,*}, Dean Sutherland^b, Juan A. Madrid^c, Maria Angeles Rol^c, Steven Frucht^d, Stuart Isaacson^e, Fernando Pagan^f, Brian N. Maddux^g, George Li^h, Winona Tseⁱ, Benjamin L. Walter^j, Rajeev Kumar^k, Daniel Kremens^l, Mark F. Lew^m, Aaron Ellenbogenⁿ, Odinachi Oguh^o, Alberto Vasquez^p, William Kinney^q, Matt Lowery^q, Maria Resnick^q, Nicole Huff^q, Jerry Posner^r, Karla V. Ballman^s, Brian E. Harvey^q, Michael Camilleri^t, Michael Zasloff^{q,u}, Denise Barbut^{q,*}

^a USF Parkinson's Disease & Movement Disorder Ctr., Tampa, FL, United States of America

^b Sarasota Memory Hospital Clinical Research Ctr., Sarasota, FL, United States of America

^c Chronobiology Laboratory, University of Murcia, CIBERFES, Spain

^d New York University Langone Medical Ctr, New York, NY, United States of America

^e Parkinson's Disease and Movement Disorders Ctr. of Boca Raton, Boca Raton, FL, United States of America

^f Department of Neurology, Georgetown University Medical Ctr., Washington, DC, United States of America

^g Riverhills Healthcare, Inc., Cincinnati, OH, United States of America

^h MEDSOL Clinical Research, Port Charlotte, FL, United States of America

ⁱ Parkinson's and Movement Disorders Ctr., Icahn School of Medicine at Mount Sinai, New York, NY, United States of America

^j Parkinson's & Movement Disorders Ctr., University Hospitals Cleveland Medical Center, Cleveland, OH, United States of America

^k Rocky Mountain Movement Disorder Ctr., Englewood, CO, United States of America

^l Department of Neurology, Thomas Jefferson University, Philadelphia, PA, United States of America

^m Keck Hospital of USC, Los Angeles, CA, United States of America

ⁿ Quest Research Institute and Michigan Institute for Neurologic Disorders, Farmington, MI, United States of America

^o Neuroscience Research, University of Florida, Jacksonville, FL, United States of America

^p Suncoast Neuroscience Associates, Inc., St. Petersburg, FL, United States of America

^q Enterin, Inc., Philadelphia, PA, United States of America

^r Memorial Sloan-Kettering Cancer Ctr., NY, NY, United States of America

^s Weill Cornell Medical Ctr., New York, NY

^t Mayo Clinic, Rochester, MN, United States of America

^u Medstar-Georgetown Transplant Institute, Washington, DC, United States of America

ARTICLE INFO

Article history:

Received 7 June 2019

Received in revised form 13 June 2019

Accepted 17 June 2019

Available online 2 July 2019

Keywords:

Squalamine

ENT-01

Parkinson's disease

Constipation

Treatment

Non-motor

Synuclein

ABSTRACT

Background: Parkinson's disease (PD) is associated with α -synuclein (α S) aggregation within the enteric nervous system (ENS) and constipation. Squalamine displaces proteins that are electrostatically bound to intracellular membranes and through this mechanism suppresses aggregation of α S monomers into neurotoxic oligomers.

Objective: We sought to evaluate the safety of ENT-01 oral tablets (a synthetic squalamine salt), its pharmacokinetics, and its effect on bowel function in PD patients with constipation.

Methods: In Stage 1, 10 patients received escalating single doses from 25 to 200 mg/day or maximum tolerated dose (MTD). In Stage 2, 34 patients received daily doses escalating from 75 to a maximum of 250 mg/day, a dose that induced change in bowel function or MTD, followed by a fixed dose for 7 days, and a 2-week washout. Primary efficacy endpoint was defined as an increase of 1 complete spontaneous bowel movement (CSBM)/week, or 3 CSBM/week over the baseline period, as defined by FDA guidelines for prokinetic agents. Safety was also assessed.

Results: Over 80% of patients achieved the primary efficacy endpoint, with the mean number of CSBM/week increasing from 1.2 at baseline to 3.6 during fixed dosing ($p = 1.2 \times 10^{-7}$). Common adverse events included nausea in 21/44 (47%) and diarrhea in 18/44 (40%) patients. Systemic absorption was $< 0.3\%$.

Conclusions: Orally administered ENT-01 was safe and significantly improved bowel function in PD, suggesting that the ENS is not irreversibly damaged in PD. Minimal systemic absorption suggests that improvements result from local stimulation of the ENS. A double-blind, placebo-controlled study is now ongoing.

[☆] NCT# 03047629.

* Corresponding authors.

E-mail addresses: rhauser@health.usf.edu, (R.A. Hauser), d.barbut@enterininc.com. (D. Barbut).

<http://dx.doi.org/10.1016/j.prdoa.2019.06.001>

2590-1125/© 2019 The Author(s). Published by Elsevier Ltd. This is an open access article under the CC BY license (<http://creativecommons.org/licenses/by/4.0/>).

1. Introduction

Parkinson's disease (PD) is a progressive neurodegenerative disorder caused by accumulation of the protein α -synuclein (α S) within the brain, autonomic nerves, and enteric nervous system (ENS) [1]. While motor symptoms are still required for a diagnosis of PD [2], non-motor symptoms often represent a greater therapeutic challenge [3]. These symptoms include constipation [4,5], disturbances in sleep architecture [6,7], cognitive dysfunction [8], hallucinations [9,10], REM behavior disorder (RBD) and depression [5,11], all of which result from impaired function of neural pathways not restored by dopamine replacement. In fact, long-term institutionalization, caregiver burden and decreased life expectancy correlate more significantly with severity of non-motor symptoms than with motor symptoms [12].

In PD, neurotoxic aggregates of α S accumulate in the ENS [13,14], as they do in the central nervous system (CNS). In addition, both epidemiological and preclinical studies suggest that aggregates of α S formed within the ENS might underlie the etiology of the CNS component of PD [14,15]. Examination of the ENS from PD patients suggests that gastrointestinal dysmotility is not a consequence of neuronal loss, but more likely the result of dysfunction caused by the presence of aggregated α S within specific neurons [16].

We have focused on squalamine, an antimicrobial aminosterol discovered in the dogfish shark, *Squalus acanthias* [17]. Squalamine, a cationic lipid, is able to enter eukaryotic cells, including primary neurons [18], and displace proteins that are bound electrostatically to intracellular membranes with a strong negative surface charge [18–21]. We recently reported that squalamine can effectively displace α S from membranes to which it is bound by this electrostatic mechanism [22]. In addition, we have shown *in vitro*, in cell culture, and in a *C. elegans* model of PD that through the mechanism of membrane displacement, squalamine also suppresses the primary nucleation and subsequent aggregation of α S monomers into neurotoxic oligomers [22].

Based on these and prior preclinical studies we conducted a 50-subject proof of principle Phase 2a clinical trial evaluating the oral administration of a synthetic salt of squalamine (ENT-01) in the treatment of severe constipation in patients with PD.

2. Materials and methods

2.1. Study design

This multicenter Phase 2 trial was conducted in two Stages: a dose-escalation toxicity study in Stage 1 and a dose range-seeking and proof of efficacy study in Stage 2. The protocol was reviewed and approved by the institutional review board for each participating center and patients provided written informed consent.

Following successful screening, all subjects underwent a 14-day run-in period where the degree of constipation was assessed through a validated daily log [23] establishing baseline complete spontaneous bowel movements (CSBM)/week. Subjects with an average of <3 CSBM/week proceeded to dosing.

In Stage 1, 10 PD patients received a single escalating dose of ENT-01 every 3–7 days beginning at 25 mg and continuing up to 200 mg or the limit of tolerability, followed by 2-weeks of wash-out. Tolerability limits included 4–6 stools/day over baseline and 3–5 episodes of vomiting over 24 h. A given dose was considered efficacious in stimulating bowel function (prokinetic) if the patient had a CSBM within 24 h of dosing.

In Stage 2, 34 patients were evaluated. First, 14 new PD patients were administered ENT-01 daily, beginning at 75 mg, escalating every 3 days by 25 mg to a dose that had a clear prokinetic effect (CSBM within 24 h of dosing on at least 2 of 3 days at a given dose), or the maximum dose of 250 mg or the tolerability limit. This dose was then maintained (“fixed dose”) for an additional 3–5 days, amounting to at least 7 days on the fixed dose. This was then followed by a 2-week washout (Fig. 1).

2.2. Participants

Patients were between 18 and 86 years of age and diagnosed with PD by a clinician trained in movement disorders following the UK Parkinson's Disease Society Brain Bank criteria [24]. Patients had to have a history of constipation as defined by <3 CSBM/week and satisfy the Rome IV criteria for functional constipation [25] at screening, which requires 2 or more of the following: straining during at least 25% of defecations; lumpy or hard stools in at least 25% of defecations; sensation of incomplete evacuation in at least 25% of defecations; sensation of anorectal obstruction/blockage in at least 25% of defecations; manual maneuvers to facilitate at least 25% of defecations.

2.3. Study endpoints

The primary objectives were to evaluate the safety of orally administered ENT-01, proof of efficacy and the dose range required to achieve a bowel response. In Stage 2, a “responder” was defined by a CSBM increase of ≥ 1 /week over baseline or ≥ 3 CSBM/week during the “fixed-dose” period. Other constipation related parameters monitored included spontaneous bowel movements (SBMs)/week, stool consistency (Bristol Stool Form Scale) [26,27], ease of passage (Ease of Evacuation Scale) [28], rescue medication use and symptoms and quality of life related to bowel function (PAC-SYM [29] and PAC-QOL [30]).

2.4. Neurologic symptoms

PD symptoms were assessed using the Unified Parkinson's Disease Rating Scale (UPDRS) [24]. Exploratory end-points included depression assessed using the Beck Depression Inventory (BDI-II) [31], cognition assessed using the Mini Mental State Examination (MMSE) [32], sleep and RBD using a daily diary and an RBD questionnaire (RBDQ) [33] and hallucinations assessed using the PD hallucinations questionnaire (PDHQ) [34] and direct questioning. Assessments were made at baseline and at the end of the fixed dose and washout periods.

2.5. Pharmacokinetics

PK data were collected on the 10 patients enrolled in Stage 1 and 10 patients enrolled in Stage 2 to determine the extent of systemic absorption. Squalamine ion concentrations were measured using a modification of a published LC/MS method [35].

2.6. Circadian system assessment

Circadian system functionality was evaluated by continuously monitoring wrist skin temperature using a temperature sensor (Thermochron iButton DS1922L; Maxim, Dallas) according to the procedure described in detail by Sarabia et al. in 2008 [36]. A nonparametric analysis was performed for each participant to characterize distal skin temperature (DST) as previously described [36,37]. Briefly, this analysis includes the following parameters: the inter-daily stability (the constancy of 24-hour rhythmic pattern over days, IS); intra-daily variability (rhythm fragmentation, IV); average of 10-minute intervals for the 10 h with the minimum temperature (L10); average of 10-minute intervals for the 5 h with the maximum temperature (M5) and the relative amplitude (RA), which was determined by the difference between M5 and L10, divided by the sum of both. Finally, the Circadian Function Index (CFI) was calculated by integrating IS, IV, and RA. Consequently, CFI is a global measure that oscillates between 0 for the absence of circadian rhythmicity and 1 for a robust circadian rhythm [37].

2.7. Statistical analysis

No formal size calculation was performed for Stage 1. The number of subjects ($n = 10$) was based on feasibility and was considered sufficient

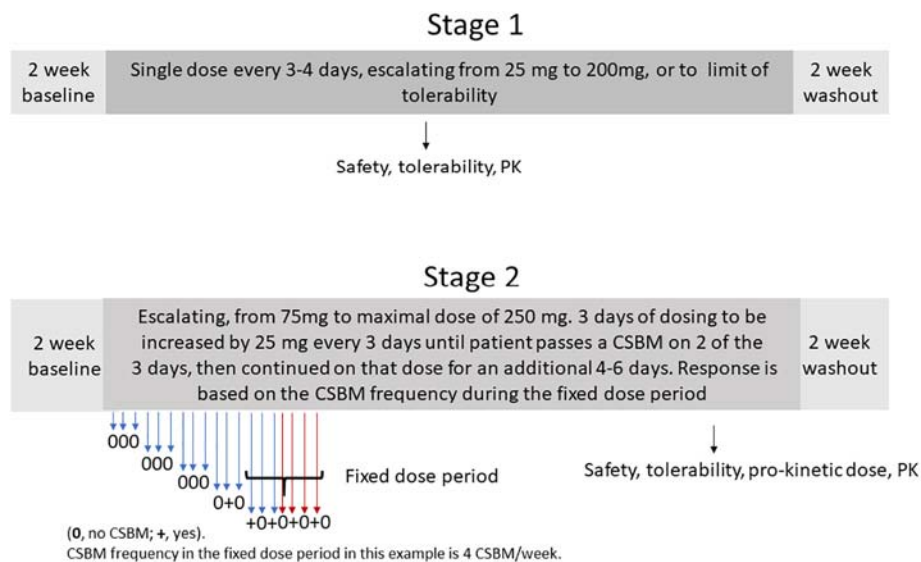


Fig. 1. Phase 2a trial.

to meet the objectives of the study which was to determine the tolerability of the treatment across the range of tested doses. For Stage 2, assuming the highest proportion of spontaneous resolution of constipation with no treatment to be 0.10, 34 evaluable subjects with assessments at baseline and at the end of the fixed dose period provided 80% power to detect the difference between 0.10 (proportion expected if patients are not treated) and an ENT-01 treated proportion of 0.29.

Adverse events (AEs) were coded using the current version of MedDRA. Severity of AEs was assessed by investigators according to Common Terminology Criteria for Adverse Events (CTCAE, v4.03): Grade 1 is labeled as Mild, Grade 2 as Moderate, and Grade 3 and above as Severe. AEs that have a possible, probable or definite relationship to study drug were defined to be related to the study drug while others were defined as “not related”. The numbers (percentage) of subjects who experienced an AE during escalation and fixed dosing periods were summarized for each stage. The denominator for calculating the percentages were based on the number of subjects ever exposed overall.

The primary efficacy outcome variable was whether or not a subject was a “success” or “failure”. This is an endpoint based on subject diary entries for the “fixed dose” period prior to the endpoint assessment defined as an average complete stool frequency increase by 1 or more over baseline, OR 3 or more complete spontaneous stools/week. The subject is deemed a “success” if s/he meets one or more of the criteria listed above, otherwise the subject will be deemed a “failure”. The primary analysis was based on all subjects with a baseline assessment and an assessment at the end of the “fixed-dose” period and was a comparison of the proportion of successes with 0.10 (the null hypothesis corresponding to no treatment effect). The proportion of subjects for whom the drug was a success was estimated with a binomial point estimate and corresponding 95% confidence interval.

An exploratory analysis was done with respect to sleep, body temperature, mood, fatigue, hallucinations, cognition and other motor and non-motor symptoms of PD. Continuous measurements within a subject were compared with a paired *t*-test and continuous measurements between subject groups were compared with a two-group *t*-test. Categorical data were compared with a chi-squared test or a Fisher's exact test if the expected cell counts were too small for a chi-squared test.

3. Results

Fifty patients were enrolled and 44 were dosed. Baseline characteristics of patients are shown in Table S1. There were equal proportions of males and females in Stage 1 as well as some non-Caucasian patients, but white males predominated in Stage 2. Patients in Stage 2 had somewhat longer

duration of Parkinson's disease and higher UPDRS scores than participants in Stage 1.

3.1. Safety and adverse event profile

In Stage 1, 10 patients were dosed, 1 (10%) withdrew prior to completion and 9 (90%) completed dosing. In stage 2, 6 (15%) patients had ≥ 3 CSBM/week at the end of the run-in period and were excluded, 34 patients were dosed, and bowel response was assessable in 31 (91%). Two patients (5.8%) were terminated prior to completion because of recurrent dizziness, and 3 others withdrew during dosing (8.8%): 2 because of loose stools and 1 because of holiday. Study-drug assignments and patient disposition are shown in Table S2 and Fig. S1, respectively.

Most AEs were confined to the GI tract (88% in Stage 1 and 63% in Stage 2). The most common AE was nausea which occurred in 4/10 (40%) patients in Stage 1 and in 15/34 (50%) in Stage 2 (Table 1) and did not appear to be dose related. Loose stools, although classified as an AE, are an anticipated pharmacological response of ENT-01, and occurred in 4/10 (40%) patients in Stage 1 and 15/34 (44%) in Stage 2. Other GI-related AEs included abdominal pain 11/44 (32%), flatulence 3/44 (6.8%), vomiting 3/44 (6.8%), worsening of acid reflux 2/44 (4.5%), and worsening of hemorrhoids 1/44 (2.2%). One patient had a lower GI bleed (serious adverse event, SAE) during the withdrawal period. This patient was receiving aspirin, naproxen and clopidogrel at the time of the bleed, and colonoscopy revealed large areas of diverticulosis and polyps. This SAE was considered unrelated to study medication.

The only other noteworthy AE was dizziness 8/44 (18%). Dizziness was graded as moderate in one patient who was receiving an alpha-adrenergic blocking agent (Terazosin). This patient was withdrawn from the study and recovered spontaneously. All other AEs resolved spontaneously without discontinuation of ENT-01. The relationship between dose and AEs is shown in Table S3. Dose limiting toxicity criteria are presented in Table S4.

3.2. Effects on bowel function

Cumulative responder rates for bowel function are shown in Fig. 2A. In Stage 1 (single dose), cumulative response rate increased in a dose-dependent fashion from 25% at 25 mg to a maximum of 80% at 200 mg.

In Stage 2 (daily dosing), the response rate increased in a dose-dependent fashion from 29.4% at 75 mg to 82.4% at 250 mg. The dose required for a bowel response was patient-specific and varied from 75 mg to 250 mg. Median efficacious dose was 100 mg. During the dosing titration,

Table 1
All adverse events (n, %).

Enrolled	Stage 1 (n = 10)	Stage 2 (n = 40)
Dosed	10	34
Gastrointestinal		
Nausea		
Mild	4 (40)	16 (47)
Moderate	0	1 (2.9)
Diarrhea		
• Mild	1 (10)	12 (35)
• Moderate	3 (30)	2 (5.8)
• Severe	0	1 (2.9)
Vomiting		
• Mild	1 (10)	2 (5.8)
• Moderate	0	0
Abdominal pain		
• Mild	2 (20)	4 (11.7)
• Moderate	3 (30)	2 (5.8)
Flatulence		
• Mild	2 (20)	1 (3)
• Moderate	0	0
Loss of appetite ^a		
• Mild	1 (10)	0
• Moderate	0	0
Worsening acid reflux		
• Mild	0	2 (5.8)
• Moderate	0	0
Worsening hemorrhoid		
• Mild	0	1 (3)
• Moderate	0	0
Lower GI bleed ^b		
• Severe	0	1 (2.5)
Non-gastrointestinal		
Dizziness		
• Mild	0	7 (20.5)
• Moderate	0	1 (2.9)
Blood in urine ^a		
• Mild	1 (10)	0
• Moderate	0	0
Headache		
• Mild	1 (10)	3 (8.8)
• Moderate	0	0
Urinary retention		
• Mild	0	1 (3)
• Moderate	0	0
Urinary tract infection		
• Mild	0	1 (3)
• Moderate	0	2 (5.8)
Increased urinary frequency		
• Mild	0	2 (5.8)
• Moderate	0	0
Skin lesions-rash		
• Mild	0	3 (8.8)
• Moderate	0	0
Eye infection		
• Mild	0	1 (3)
• Moderate	0	0
Difficulty falling asleep		
• Mild	0	1 (3)
• Moderate	0	0

^a Unrelated to ENT-01.

^b Colonic diverticulosis, polyp, patient on aspirin, Plavix and naproxen. Unrelated to ENT-01.

patients rarely experienced a CSBM until their prokinetic dose had been reached, after which the frequency sharply increased.

Average CSBM/week increased from 1.2 at baseline to 3.6 at fixed dose ($p = 1.2 \times 10^{-7}$) and SBM increased from 2.6 at baseline to 4.4 at fixed dose ($p = 1.2 \times 10^{-5}$) (Table 2). Use of rescue medication decreased from 1.8/week at baseline to 0.3/week at fixed dose ($p = 2.33 \times 10^{-5}$). Stool consistency based on the Bristol stool scale also improved, increasing from (a mean of) 2.7 to 4.1 ($p = 0.0002$) and ease of passage increased from 3.2 to 3.7 ($p = 0.04$). Subjective indices of wellbeing (PAC-QOL) and constipation symptoms (PAC-SYM) also improved during treatment ($p = 0.01$ and $p = 0.05$ respectively).

The dose that proved efficacious in inducing a bowel response was strongly related to constipation severity at baseline ($p = 0.00055$) (Fig. 2B, lower panel); patients with baseline constipation of < 1 CSBM/week required higher doses for a response (mean 192 mg) than patients with ≥ 1 CSBM/week (mean 120 mg).

The improvement in most stool-related indices did not persist beyond the treatment period, returning to baseline value during the washout period (Table S5).

3.3. Effect of ENT-01 on neurologic symptoms in PD

During the trial, neuropsychiatric symptoms were assessed in the 34 patients who were dosed in Stage 2 at baseline and at the end of the fixed dose and washout periods (Table S6). Total UPDRS score was 64.2 at baseline, 60.8 at the end of the fixed dose period, and 55.7 at the end of the 2-week wash-out period ($p = 0.0008$); MMSE was 28.4 at baseline, 28.8 at the end of the fixed dose period, and 29.3 at the end of wash-out ($p = 0.0004$). PDHQ was 1.3 at baseline and 0.9 during wash-out ($p = 0.03$). Hallucinations and delusions improved or disappeared altogether in 5 of 6 patients during treatment and did not return for several weeks following discontinuation of ENT-01. The frequency of arm or leg thrashing during sleep (RBD) diminished progressively from 2.2 episodes/week at baseline to 0 at maximal dose and total sleep time increased from 7.1 h at baseline to 8.4 h at 250 mg (Fig. S2).

3.4. ENT-01 and circadian rhythm

We evaluated wrist skin temperature by continuous monitoring (Thermochron iButton DS1922L; Maxim, Dallas) following published procedures (36). Circadian rhythm of skin temperature was evaluable in 12 patients. ENT-01 administration improved all markers of healthy circadian function, increasing rhythm stability (IS, $p = 0.026$), relative amplitude (RA, $p = 0.001$) and circadian function index (CFI, $p = 0.016$), while reducing rhythm fragmentation (IV, $p = 0.031$). The improvement persisted during wash-out (IS, $p = 0.008$ and CFI, $p = 0.004$) (Fig. S3). These data indicate that orally administered ENT-01 appears to improve circadian rhythm.

3.5. ENT-01 acts locally on the ENS

To determine the extent of systemic absorption, we collected blood at pre-specified times as indicated in Methods (Table S7). Systemic absorption of ENT-01 was $< 0.3\%$, strongly suggesting that its effect is mediated by local action in the GI tract.

4. Discussion

We demonstrate in this study that squalamine, the active ion of ENT-01, can restore gastrointestinal motility in patients with PD. This suggests that a major division of the nervous system, the ENS, is not irreversibly damaged in patients with PD, despite the often-long-standing constipation that might suggest otherwise. From the limited studies conducted on human tissue, it is believed that constipation is caused by the accumulation of aggregates of α S, rather than by loss of neurons, but the underlying mechanism is unknown [16]. In PD mouse models neurological dysfunction has been shown to correlate with the accumulation of aggregates of A53T α S within the affected neurons and their axonal synapses [38,39].

Although the mechanism by which these aggregates disturb neuronal function is still unclear in these mouse models, it is assumed that because they are membrane active [22], α S aggregates interfere with cellular functions. In addition, recent studies support the hypothesis that the aggregation of α S monomers is initiated on a membrane surface enriched in anionic phospholipids [22]. For these reasons, we considered targeting the ENS in patients with PD with orally administered ENT-01, a compound known to displace proteins that are bound electrostatically to intracellular membranes. The squalamine ion rapidly activates the AMPA glutamate

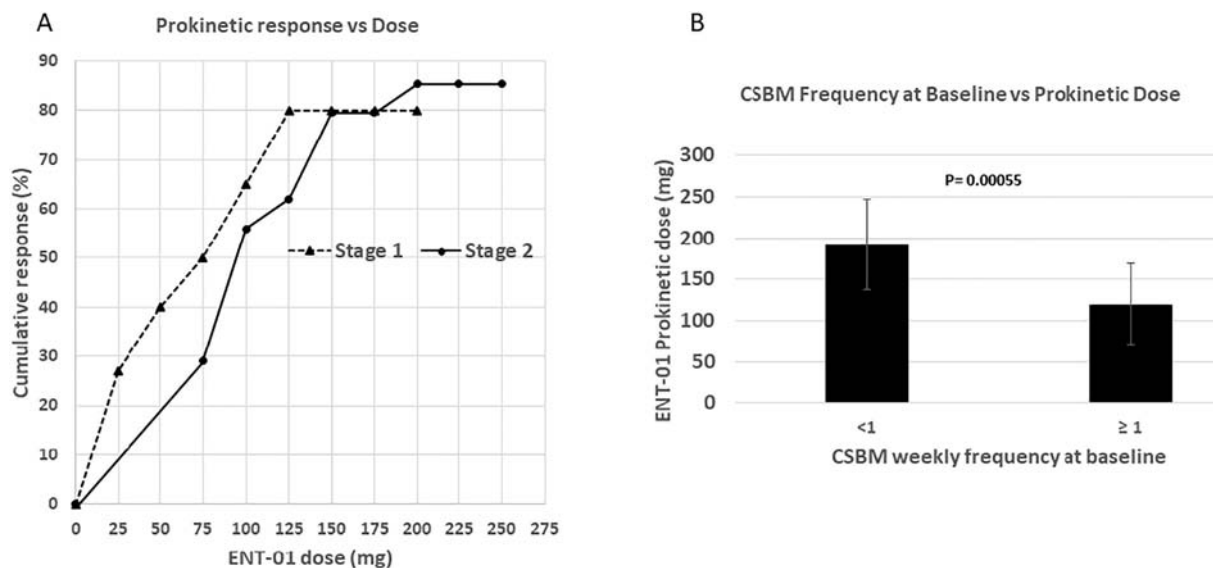


Fig. 2. Prokinetic activity of ENT-01. A. In Stage 1 (single dose), cumulative prokinetic response rate was defined as the proportion of patients who had a CSBM within 24 h of dosing. Dosing started at 25 mg. In Stage 2 (daily dosing), a prokinetic response was defined as the fraction of patients who had a CSBM within 24 h of dosing on at least 2 out of 3 days at any given dose. Dosing started at 75 mg. B. Prokinetic dose of ENT-01 was significantly related to baseline constipation severity ($p = 0.00055$). Patients with baseline CSBM <1 required a higher dose (mean, 192 mg) of ENT-01 than patients with CSBM ≥ 1 (mean, 120 mg). Significance determined by t -test.

receptor in primary cortical neurons by displacing the inhibitory TARP regulatory protein from the cytoplasmic face of the plasma membrane [18]; similarly the squalamine ion inhibits the sodium hydrogen exchanger (type 3) by displacing its positively charged carboxyl-terminus from the cytoplasmic face of the plasma membrane [21]. Most importantly, we have shown that the squalamine ion can displace α S monomers from anionic membranes and inhibit its aggregation into neurotoxic aggregates *in vitro* and *in vivo* [22].

This phase 2 trial involving 50 patients with PD and constipation assessed the safety of orally administered ENT-01, and the effect on bowel function and neurologic symptoms of PD. In addition, the study aimed to identify a dose of ENT-01 that normalized bowel function in each patient. While the study achieved the objectives of identifying safety and pharmacodynamic responses supporting further evaluation of ENT-01 in PD, it is the first proof-of-concept demonstration that pharmacologically targeting the affinity of neuronal membranes for α S can restore GI motility in patients with PD and constipation. ENT-01 most likely improves bowel function in PD patients by acting locally on the gastrointestinal tract as supported by the oral bioavailability $<0.3\%$. This conclusion is further supported by prior clinical trials that demonstrated that intravenous administration of squalamine was not associated with increased gastrointestinal motility, despite reaching systemic blood levels one thousand-fold greater than that achieved by orally administered ENT-01 [40,41]. The topical action would also explain why AEs were largely confined to the gastrointestinal tract.

Table 2

Stool related indices in Stage 2 (Dosed patients, $n = 34$).

	Baseline (mean, SD)	Fixed dose (mean, SD)	p -Value
CSBM ^a	1.2 (0.90)	3.6 (2.35)	1.2×10^{-7}
SBM ^b	2.6 (1.45)	4.4 (2.16)	1.2×10^{-5}
Suppository use ^a	1.8 (1.92)	0.3 (0.67)	2.3×10^{-5}
Consistency ^c	2.7 (1.20)	4.1 (2.15)	0.0002
Ease of passage ^b	3.2 (0.73)	3.7 (1.19)	0.04
PAC-QOL total	1.4 (0.49)	1.2 (0.59)	0.01
PAC-SYM	1.3 (0.45)	1.1 (0.49)	0.05

^a Weekly average.

^b Ease of evacuation scale, where 1-manual disimpaction and 7 = incontinent.

^c Bristol stool scale 1–7, where 1 = separate hard lumps and 7 = liquid consistency.

Although ENT-01 stimulates GI motility in PD patients with constipation, we have no direct experimental evidence that it does so by the proposed mechanism of electrostatic displacement of α S aggregates from ENS neurons. Conclusive electrophysiological studies will be difficult to conduct on human tissues. Our hypothesis, however, also predicts that oral administration of ENT-01 should, over the course of chronic administration, reduce the accumulation of neurotoxic α S aggregates within the ENS of a PD patient. These studies will require endoscopic sampling of upper GI tissues taken before and during ENT-01 administration. The feasibility of such a study is being assessed.

The principal AEs were nausea and loose stools. Nausea was not dose related and possibly positional since it occurred most frequently when taken supine. Loose stools are an expected pharmacological response at high doses and are reversed by reducing the dose.

The effective pro-kinetic dose ranged between 75 mg and 250 mg, with 82.4% of patients responding within this range. This dose correlated positively with constipation severity at baseline, consistent with the hypothesis that gastrointestinal dysmotility in PD results from the progressive accumulation of α S in the ENS, and that the effective intracellular concentrations of squalamine required to restore neuronal activity would be proportional to the intracellular load of α S. Confirmation of this hypothesis would require examination of gastrointestinal tissue from the clinical population.

We observed potential signals of clinical benefit for parkinsonism, cognition, hallucinations, sleep and RBD. Although intriguing, this was an open label trial and placebo effects cannot be excluded; these outcomes must undergo rigorous evaluation in future placebo-controlled trials.

We also monitored circadian rhythm through the use of a temperature sensor that continuously captured wrist skin temperature [36], an objective measure of the autonomic regulation of vascular perfusion. Circadian cycles of wrist skin temperature have been shown to correlate with sleep-wake cycles, reflecting the impact of nocturnal heat dissipation from the skin on the decrease in core temperature and the onset of sleep [36,37]. Oral administration of ENT-01 had a significant positive impact on the circadian rhythm of skin temperature in the 12 patients with evaluable data. Precisely how ENT-01 influenced circadian rhythm remains under investigation and will be pursued further in additional clinical studies.

In summary, orally administered squalamine stimulates GI motility in both mouse models of PD and patients with PD and constipation. Placebo controlled clinical trials of longer duration are planned to determine the

durability of the effect of oral ENT-01 on constipation in PD and possible effects on neurologic symptoms and disease progression.

Declaration of Competing Interest

Barbut, Zasloff, Kinney, Harvey, Resnick, Lowry, and Huff are employees of Enterin and hold equity. Camilleri is a member of Enterin's Scientific Advisory Board. Ballmann is a paid consultant of Enterin. Hauser has received consulting fees from Enterin.

Acknowledgements

We would like to acknowledge Tom Andor and Gail Nielsen for database management, Leigh Harrell BS, Michele Lewis RN and all the other study coordinators at participating sites and the subjects who took part in the study.

This study was funded by Enterin, Inc.

Appendix A. Supplementary data

Supplementary data to this article can be found online at <https://doi.org/10.1016/j.prdoa.2019.06.001>.

References

- [1] H. Braak, U. Rub, W.P. Gai, K. Del Tredici, Idiopathic Parkinson's disease: possible routes by which vulnerable neuronal types may be subject to neuroinvasion by an unknown pathogen, *J. Neural Transm. (Vienna)* 110 (2003) 517–536.
- [2] A.J. Hughes, S.E. Daniel, L. Kilford, A.J. Lees, Accuracy of clinical diagnosis of idiopathic Parkinson's disease: a clinico-pathological study of 100 cases, *J. Neurol. Neurosurg. Psychiatry* 55 (1992) 181–184.
- [3] L.B. Zahodne, M. Marsiske, M.S. Okun, R.L. Rodriguez, I. Malaty, D. Bowers, Mood and motor trajectories in Parkinson's disease: multivariate latent growth curve modeling, *Neuropsychology* 26 (2012) 71–80.
- [4] W.G. Ondo, C. Kenney, K. Sullivan, A. Davidson, C. Hunter, I. Jahan, A. McCombs, A. Miller, T.A. Zesiewicz, Placebo-controlled trial of lubiprostone for constipation associated with Parkinson disease, *Neurology* 78 (2012) 1650–1654.
- [5] C.H. Lin, J.W. Lin, Y.C. Liu, C.H. Chang, R.M. Wu, Risk of Parkinson's disease following severe constipation: a nationwide population-based cohort study, *Parkinsonism Relat. Disord.* 20 (2014) 1371–1375.
- [6] W.G. Ondo, K. Dat Vuong, H. Khan, F. Atassi, C. Kwak, J. Jankovic, Daytime sleepiness and other sleep disorders in Parkinson's disease, *Neurology* 57 (2001) 1392–1396.
- [7] M.D. Gjerstad, G. Alves, T. Wentzel-Larsen, D. Aarsland, J.P. Larsen, Excessive daytime sleepiness in Parkinson disease: is it the drugs or the disease? *Neurology* 67 (2006) 853–858.
- [8] M. Auyeung, T.H. Tsoi, V. Mok, C.M. Cheung, C.N. Lee, R. Li, E. Yeung, Ten year survival and outcomes in a prospective cohort of new onset Chinese Parkinson's disease patients, *J. Neurol. Neurosurg. Psychiatry* 83 (2012) 607–611.
- [9] J.H. Friedman, U. Akbar, Psychosis in Parkinson's disease: unexplained observations in a seemingly simple model, *Expert. Rev. Neurother.* 16 (2016) 595–596.
- [10] N.J. Diederich, G. Fenelon, G. Stebbins, C.G. Goetz, Hallucinations in Parkinson disease, *Nat. Rev. Neurol.* 5 (2009) 331–342.
- [11] D. Aarsland, K. Bronnick, U. Ehart, P.P. De Deyn, S. Tekin, M. Emre, J.L. Cummings, Neuropsychiatric symptoms in patients with Parkinson's disease and dementia: frequency, profile and associated care giver stress, *J. Neurol. Neurosurg. Psychiatry* 78 (2007) 36–42.
- [12] C.G. Goetz, G.T. Stebbins, Risk factors for nursing home placement in advanced Parkinson's disease, *Neurology* 43 (1993) 2227–2229.
- [13] H. Braak, I. Alafuzoff, T. Arzberger, H. Kretschmar, K. Del Tredici, Staging of Alzheimer disease-associated neurofibrillary pathology using paraffin sections and immunocytochemistry, *Acta Neuropathol.* 112 (2006) 389–404.
- [14] B.A. Killinger, Z. Madaj, J.W. Sikora, N. Rey, A.J. Haas, Y. Vepa, D. Lindqvist, H. Chen, P.M. Thomas, P. Brundin, L. Brundin, V. Labrie, The vermiform appendix impacts the risk of developing Parkinson's disease, *Sci. Transl. Med.* 10 (2018).
- [15] M.C. Houser, M.G. Tansey, The gut-brain axis: is intestinal inflammation a silent driver of Parkinson's disease pathogenesis? *NPJ Parkinsons Dis* 3 (2017) 3.
- [16] D.M. Annerino, S. Arshad, G.M. Taylor, C.H. Adler, T.G. Beach, J.G. Greene, Parkinson's disease is not associated with gastrointestinal myenteric ganglion neuron loss, *Acta Neuropathol.* 124 (2012) 665–680.
- [17] K.S. Moore, S. Wehrli, H. Roder, M. Rogers, J.N. Forrest Jr., D. McCrimmon, M. Zasloff, Squalamine: an aminosterol antibiotic from the shark, *Proc. Natl. Acad. Sci. U. S. A.* 90 (1993) 1354–1358.
- [18] A. Sumioka, D. Yan, S. Tomita, TARP phosphorylation regulates synaptic AMPA receptors through lipid bilayers, *Neuron* 66 (2009) 755–767.
- [19] M. Zasloff, A.P. Adams, B. Beckerman, A. Campbell, Z. Han, E. Luijten, I. Meza, J. Julander, A. Mishra, W. Qu, J.M. Taylor, S.C. Weaver, G.C. Wong, Squalamine as a broad-spectrum systemic antiviral agent with therapeutic potential, *Proc. Natl. Acad. Sci. U. S. A.* 108 (2011) 15978–15983.
- [20] T. Yeung, G.E. Gilbert, J. Shi, J. Silvius, A. Kapus, S. Grinstein, Membrane phosphatidylserine regulates surface charge and protein localization, *Science* 319 (2008) 210–213.
- [21] R.T. Alexander, V. Jaumouille, T. Yeung, W. Furuya, I. Peltekova, A. Boucher, M. Zasloff, J. Orlowski, S. Grinstein, Membrane surface charge dictates the structure and function of the epithelial Na⁺/H⁺ exchanger, *EMBO J.* 30 (2011) 679–691.
- [22] M. Perni, C. Galvagnion, A. Maltsev, G. Meisl, M.B. Muller, P.K. Challa, J.B. Kirkegaard, P. Flagmeier, S.I. Cohen, R. Cascella, S.W. Chen, R. Limboker, P. Sormanni, G.T. Heller, F.A. Aprile, N. Cremades, C. Cecchi, F. Chiti, E.A. Nollen, T.P. Knowles, M. Vendruscolo, A. Bax, M. Zasloff, C.M. Dobson, A natural product inhibits the initiation of alpha-synuclein aggregation and suppresses its toxicity, *Proc. Natl. Acad. Sci. U. S. A.* 114 (2017) E1009–E1017.
- [23] A.R. Zinsmeister, D. Burton, M. Camilleri, Pharmacodynamic and clinical endpoints for functional colonic disorders: statistical considerations, *Dig. Dis. Sci.* 58 (2013) 509–518.
- [24] S.E.R. Fahn, Members of the UPDRS Development Committee, Unified Parkinson's Disease Rating Scale, Macmillan Health Care Information, Florham Park, NJ, 1987.
- [25] F. Mearin, E. Rey, A. Balboa, Functional and motor gastrointestinal disorders, *Gastroenterol. Hepatol.* 39 (Suppl 1) (2016) 3–13.
- [26] S.J. Lewis, K.W. Heaton, Stool form scale as a useful guide to intestinal transit time, *Scand. J. Gastroenterol.* 32 (1997) 920–924.
- [27] K.W. Heaton, J. Radvan, H. Cripps, R.A. Mountford, F.E. Braddon, A.O. Hughes, Defecation frequency and timing, and stool form in the general population: a prospective study, *Gut* 33 (1992) 818–824.
- [28] V. Andresen, M. Camilleri, I.A. Busciglio, et al., Effect of 5 days linaclotide on transit and bowel function in females with constipation-predominant irritable bowel syndrome, *Gastroenterology* 133 (2007) 761–768.
- [29] L. Frank, L. Kleinman, C. Farup, L. Taylor, P. Miner Jr, Psychometric validation of a constipation symptom assessment questionnaire, *Scand. J. Gastroenterol.* 34 (1999) 870–877.
- [30] P. Marquis, C. De La Loge, D. Dubois, A. McDermott, O. Chassany, Development and validation of the Patient Assessment of Constipation Quality of Life questionnaire, *Scand. J. Gastroenterol.* 40 (2005) 540–551.
- [31] R.A. Steer, D.J. Rissmiller, A.T. Beck, Use of the Beck Depression Inventory-II with depressed geriatric inpatients, *Behav. Res. Ther.* 38 (2000) 311–318.
- [32] D. Palsetia, G.P. Rao, S.C. Tiwari, P. Lodha, A. De Sousa, The clock drawing test versus mini-mental status examination as a screening tool for dementia: a clinical comparison, *Indian J. Psychol. Med.* 40 (2018) 1–10.
- [33] K. Stiasny-Kolster, G. Mayer, S. Schafer, J.C. Moller, M. Heinzel-Gutenbrunner, W.H. Oertel, The REM sleep behavior disorder screening questionnaire—a new diagnostic instrument, *Mov. Disord.* 22 (2007) 2386–2393.
- [34] S. Papapetropoulos, H. Katzen, A. Schrag, C. Singer, B.K. Scanlon, D. Nation, A. Guevara, B. Levin, A questionnaire-based (UM-PDQH) study of hallucinations in Parkinson's disease, *BMC Neurol.* 8 (2008) 21.
- [35] A.C. Li, A.M. Sabo, T. McCormick, S.M. Johnston, Quantitative analysis of squalamine, a self-ionization-suppressing aminosterol sulfate, in human plasma by LC-MS/MS, *J. Pharm. Biomed. Anal.* 34 (2004) 631–641.
- [36] J.A. Sarabia, M.A. Rol, P. Mendiola, J.A. Madrid, Circadian rhythm of wrist temperature in normal-living subjects: a candidate of new index of the circadian system, *Physiol. Behav.* 95 (2008) 570–580.
- [37] E. Ortiz-Tudela, A. Martinez-Nicolas, J. Albares, F. Segarra, M. Campos, E. Estivill, M.A. Rol, J.A. Madrid, Ambulatory circadian monitoring (ACM) based on thermometry, motor activity and body position (TAP): a comparison with polysomnography, *Physiol. Behav.* 126 (2014) 30–38.
- [38] Y.M. Kuo, Z. Li, Y. Jiao, N. Gaborit, A.K. Pani, B.M. Orrison, B.G. Bruneau, B.I. Giasson, R.J. Smeyne, M.D. Gershon, R.L. Nussbaum, Extensive enteric nervous system abnormalities in mice transgenic for artificial chromosomes containing Parkinson disease-associated alpha-synuclein gene mutations precede central nervous system changes, *Hum. Mol. Genet.* 19 (2010) 1633–1650.
- [39] B.I. Giasson, J.E. Duda, S.M. Quinn, B. Zhang, J.Q. Trojanowski, V.M. Lee, Neuronal alpha-synucleinopathy with severe movement disorder in mice expressing A53T human alpha-synuclein, *Neuron* 34 (2002) 521–533.
- [40] P. Bhargava, J.L. Marshall, W. Dahut, N. Rizvi, N. Trocky, J.I. Williams, H. Hait, S. Song, K.J. Holroyd, M.J. Hawkins, A phase I and pharmacokinetic study of squalamine, a novel antiangiogenic agent, in patients with advanced cancers, *Clin. Cancer Res.* 7 (2001) 3912–3919.
- [41] D. Hao, L.A. Hammond, S.G. Eckhardt, A. Patnaik, C.H. Takimoto, G.H. Schwartz, A.D. Goetz, A.W. Tolcher, H.A. McCreery, K. Mamun, J.I. Williams, K.J. Holroyd, E.K. Rowinsky, A Phase I and pharmacokinetic study of squalamine, an aminosterol angiogenesis inhibitor, *Clin. Cancer Res.* 9 (2003) 2465–2471.

Supplementary Information

Targeting Neurons in the Gastrointestinal Tract to Treat Parkinson's Disease

Table of contents:

- List of investigators
- Figure S1: Patient disposition
- Figure S2: Effect of ENT-01 on total sleep time
- Figure S3: Effect of ENT-01 on circadian rhythm parameters
- Table S1: Baseline characteristics of dosed patients
- Table S2: Study drug assignments and adherence to treatment
- Table S3: Common Adverse events by dose
- Table S4: Dose limiting toxicity criteria
- Table S5: Reversal of stool indices to baseline during wash-out (Stage 2)
- Table S6: Effect of ENT-01 on neurological symptoms
- Table S7: PK of orally administered ENT-01 in Stages 1 and 2
- Financial disclosures
- References

List of investigators:

Robert A. Hauser, M.D., M.B.A., USF Parkinson's Disease & Movement Disorder Ctr. Tampa, Florida

Juan A. Madrid, Chronobiology Laboratory, IMIB-Arrixaca, Universidad de Murcia, CIBERFES, Instituto de Salud Carlos III, Murcia, Spain

Angeles Rol, Chronobiology Laboratory, IMIB-Arrixaca, Universidad de Murcia, CIBERFES, Instituto de Salud Carlos III, Murcia, Spain

Dean Sutherland, M.D., Ph.D., Sarasota Memory Hospital Clinical Research Ctr., Sarasota, Florida

Stuart Isaacson, M.D., Parkinson's Disease and Movement Disorder Ctr. Of Boca Raton. Boca Raton, Florida

Fernando Pagan, M.D., Georgetown University, Department of Neurology, Washington, D.C.

Brian N. Maddux, M.D., Ph.D., Riverhills Healthcare, Inc. Cincinnati, Ohio

George Li, M.D., MEDSOL Clinical Research, Port Charlotte, Florida

Winona Tse, M.D., Icahn School of Medicine at Mount Sinai, Parkinson's and Movement Disorders Center, New York, NY.

Benjamin L. Walter, M.D., Parkinson's & Movement Disorders Center, University Hospitals Cleveland Medical Center, Cleveland, Ohio

Rajeev Kumar, M.D., Rocky Mtn. Movement Disorder Ctr., Englewood, Colorado.

Daniel Kremens, M.D., Thomas Jefferson University, Department of Neurology, Philadelphia, PA

Mark F. Lew, M.D., Keck Hospital of USC, Los Angeles, CA

Aaron Ellenbogen, D.O., Quest Research Institute and Michigan Institute for Neurologic Disorders, Farmington, Michigan

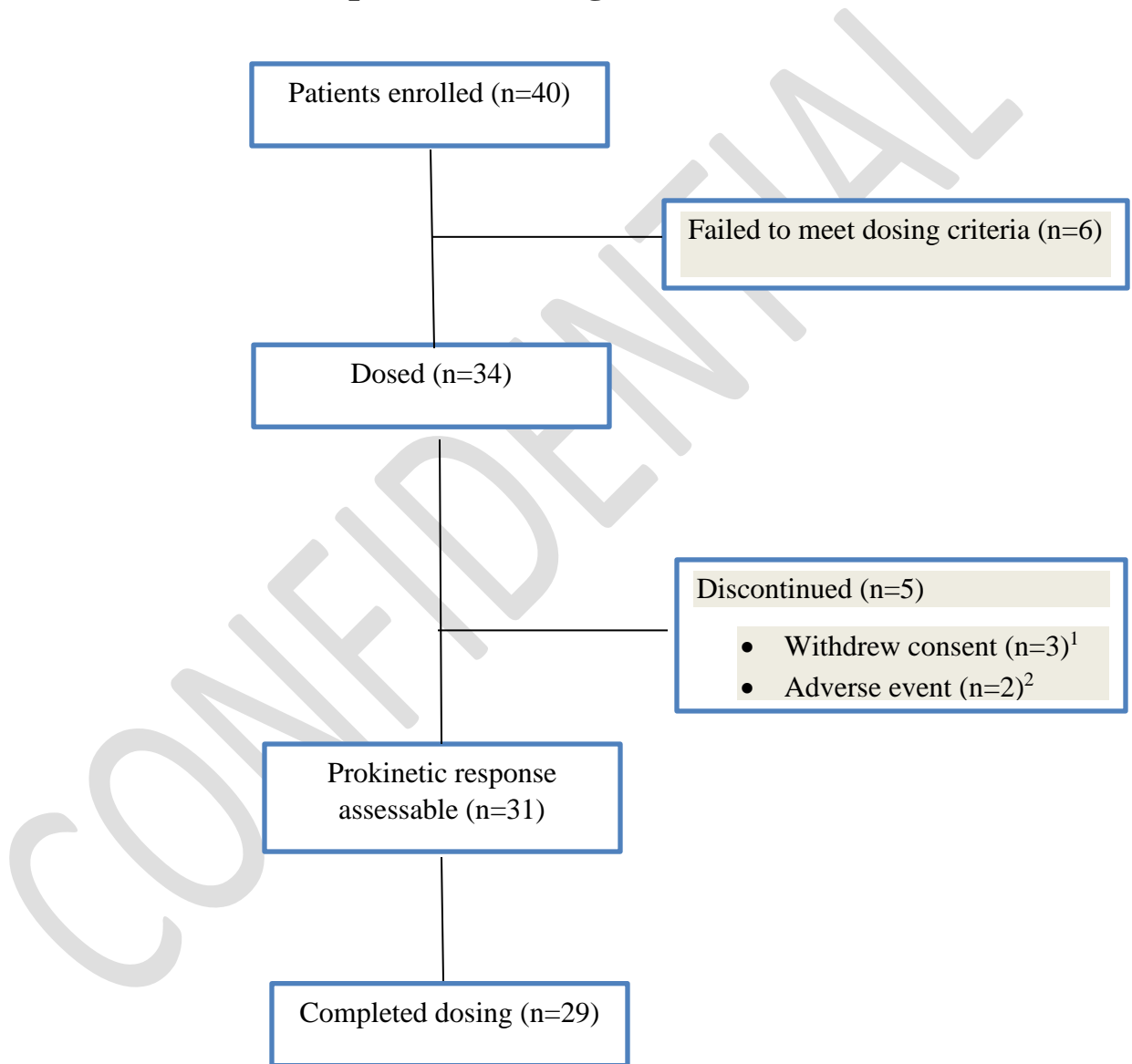
Odinachi Oguh, M.D., Neuroscience Research, University of Florida, Jacksonville, Florida

Alberto Vasquez, M.D., Suncoast Neuroscience Associates, Inc. St. Petersburg, Florida

CONFIDENTIAL

FIGURE S1

FIGURE S1 Patient disposition in Stage 2



¹ 1 patient was lost to follow up and 2 patients discontinued because of diarrhea

² 2 patients were withdrawn because of recurrent dizziness after medication

Figure S2

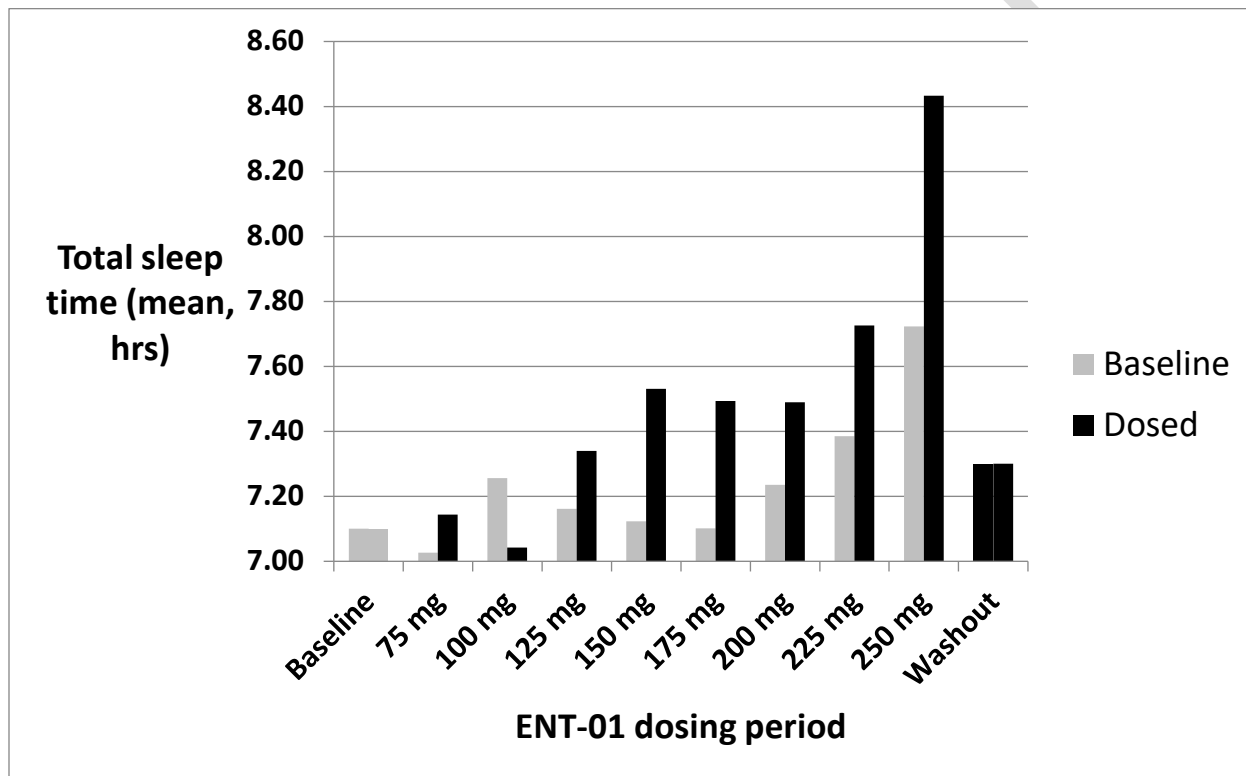
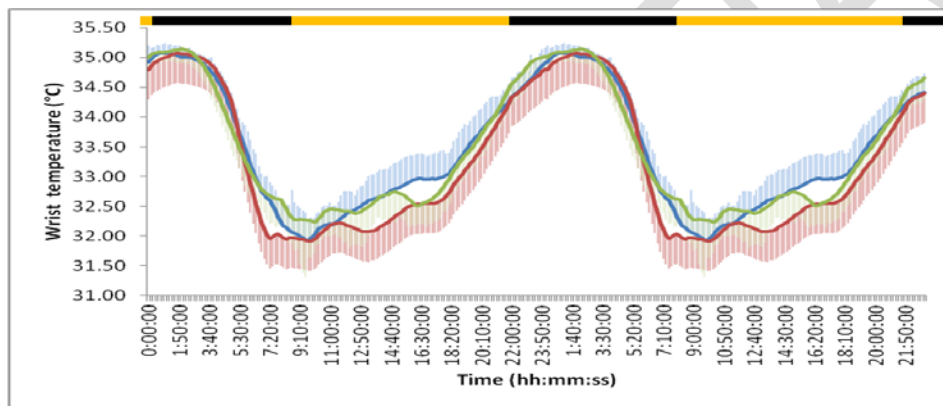


Figure S2. Total sleep time in relation to ENT-01 dose.

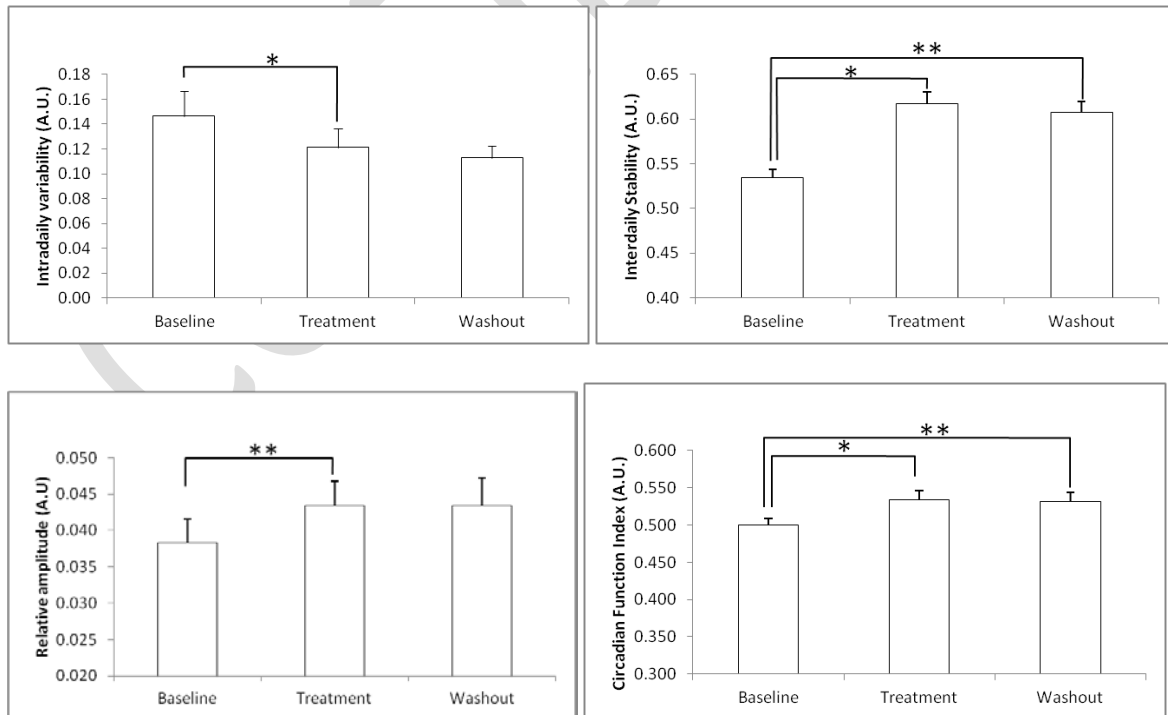
Total sleep time was obtained from the sleep diary by subtracting awake time during the night from total time spent in bed. Total sleep time per night was logged for each patient at baseline, each dosing period and at washout and the means were determined. The light grey bar represents the baseline value for each cohort at a given dose level and the dark grey bar represents the value for the same cohort at the stated dose of ENT-01. The number of patients represented at each value are: Baseline,33;75mg,21;100mg,28;125mg,18;150mg,15;175mg,12;200mg,7;225mg,3; 250mg,2; washout, 33. P values were as follows: 75mg, p=0.4; 100mg, p=0.1; 125mg, p=0.3; 150mg, p=0.07; 175mg, p=0.03; 200mg, p=0.3; 225mg, p=0.5; 250mg, p=0.3; wash-out, p=0.04 (paired t test).

Figure S3

A



B



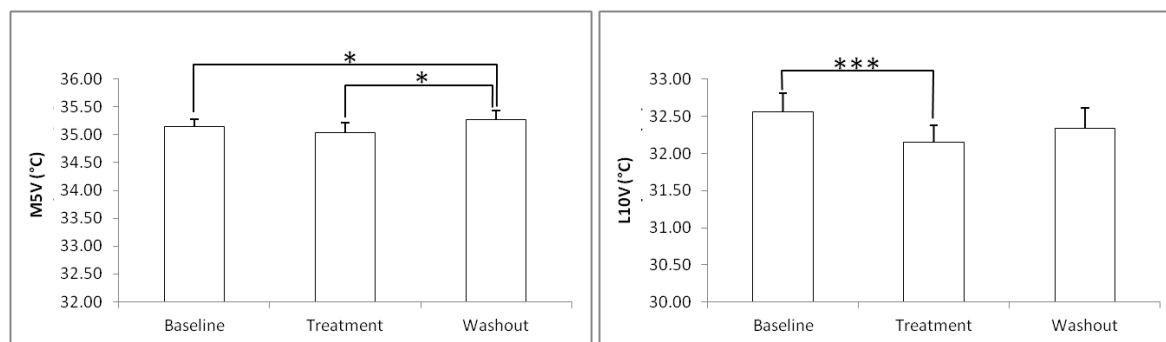


Figure S3. Effect of ENT-01 on circadian rhythm. A) Mean waveform of temperature under three conditions per patient: baseline (blue line), treatment with highest drug dose (red line) and washout (green line). Each mean waveform is double plotted for better visualization. Low temperatures indicates higher activation, while higher values are associated with drowsiness and sleepiness. The top black bar indicates a standard rest period from 23:00 to 07:00h. B) Circadian non- parametric analysis of wrist skin temperature rhythm throughout each condition (baseline, treatment with highest dose of ENT-01 and washout). Inter-daily stability (IS) or rhythm regularity, intra-daily variability (IV), or rhythm fragmentation, relative amplitude (RA) or rhythm's robustness. M5V refers to the five consecutive hours with the highest temperature or high somnolence, while L10V, indicates the mean of the ten consecutive hours with lowest temperature or high activation. The circadian function index (CFI) is an integrated score that ranges from 0 (absence of circadian rhythm) to 1 (robust circadian rhythm). Student's paired t-test, * $p < .05$, ** $p < 01$, *** $p < .001$. Values expressed as mean \pm SEM (n=12 in each condition).

Table S1. Baseline Characteristics of Dosed Patients			
Characteristic	Stage 1** (n=10)	Stage 2*** (n=34)	Total (n=44)
Sex- no. (%)			
1) <input type="checkbox"/> Male	5 (50)	25 (73.5)	30 (68.1)
2) <input type="checkbox"/> Female	5 (50)	9 (26.5)	14 (31.8)
White race-no. (%)	8 (80)	34 (100)	42 (95.54)
Age-year			
Mean	65.0	74.5	72.5
Range	58-70.5	60.6-84.2	58 – 84.2
Age at PD diagnosis-year			
Mean	61.1	67.7	66.2
Range	54.2-69	50.6-82.5	50.6 – 82.5
Duration of PD-year			
Mean	4.2	6.8	6.2
Range	1–11	0.3-17.3	0.3 – 17.3
Duration of constipation-year			
Mean	25.8	16.8	18.9
Range	1-65	0.5-66.0	0.5 – 66.0
UPDRS score			
Mean	53.4	63.2	61.3
Range	33-88	24-122	24.0 – 122.0
Hoehn and Yahr-Stage			
Mean	2.0	2.4	2.3
Range	2.0	1.0-5.0	1.0 – 5.0
Constipation severity* – CSBM/week- no. (%)			
0-1	8(80)	14(41.2)	22 (50)
1.1-2	2 (20)	17(50)	19 (43.2)
2.1-3	0	3 (8.8)	3 (6.8)

*At baseline. Baseline value is the average number of CSBMs per week calculated at the end of the 2-week run-in period.

**In Stage 1, 10 patients received single escalating doses every 3-7 days starting at 25mg and escalating up to dose limiting toxicity (DLT) or 200mg, whichever came first, followed by a 2-week wash-out period.

***In Stage 2, 15 patients received daily doses starting at 75mg and escalating every 3 days up to prokinetic dose (dose producing CSBMs on at least 2 of 3 days) or 175mg, whichever came first, followed by an additional 2-4 days at that dose (“fixed dose” period). Wash-out lasted 2 weeks. The remaining 19 patients were escalated from 100mg to prokinetic dose or 250mg, whichever came first, followed by an additional 2-4 days at that dose and then a 2-week wash-out period.

Table S2. Study drug assignments and adherence to treatment		
	Stage 1	Stage 2
Enrolled	10	40
Failed prior to dosing	0	6
Dosed	10	34
• 25-200	10	
• 75-175		19
• 100-250		15
Terminated (%)	0 (0)	2 (5.8)
Withdrew (%)	1 (10)	3 (8.8)
Completed dosing (%)	9 (90)	31* (91)
Randomized		15
• Treatment		6
• Placebo		9
*29 patients completed dosing but an additional 2 who withdrew had an assessable prokinetic end-point.		

Table S3. Common adverse events by dose						
	Stage 1			Stage 2		
Dose (mg)	Diarrhea	Nausea	Vomiting	Diarrhea	Nausea	Dizziness*
0	0	0	0	1	0	2
25	1	0	0	-	-	-
50	1	0	0	-	-	-
75	1	0	0	7	3	8
100	0	1	1	10	12	7
125	1	2	1	3	4	8
150	1	0	0	2	11	2
175	1	1	0	1	12	0
200	0	2	0	3	6	-
225	-	-	-	3	1	-
250	-	-	-	2	-	-

*lightheadedness included

Table S4. Dose limiting toxicity criteria	
Diarrhea	Increase 4-6 stools /day over baseline
Vomiting	3-5 episodes in 24 hours
Abdominal pain	Moderate pain limiting daily activities
Postural hypotension	Moderately symptomatic and limiting daily activities or BP <80/40

CONFIDENTIAL

Table S5. Reversal of stool indices to baseline during the wash-out period (Stage 2)				
	Baseline (Mean, SD)	Fixed dose (Mean, SD)	Wash-out (Mean, SD)	P-value (wash-out vs. baseline)
CSBM	1.2 (0.90)	3.6 (2.35)	1.8 (1.19)	0.01
SBM	2.6 (1.45)	4.4 (2.16)	3.2 (1.80)	0.16
Ease	3.2 (0.73)	3.7 (1.19)	3.3 (0.81)	0.78
Consistency	2.7 (1.20)	4.1 (2.15)	2.8 (1.39)	0.85
Rescue meds	1.8 (1.92)	0.3 (0.68)	1.0 (1.40)	0.10
PAQ-QOL	1.4 (0.49)	1.2 (0.59)	1.2 (0.62)	0.05
PAQ-SYM	1.3 (0.45)	1.1 (0.47)	1.1 (0.50)	0.09

CONFIDENTIAL

Table S6. Effect of ENT-01 on neurological symptoms (n=34)					
UPDRS	Baseline (Mean, SD)	Fixed dose (Mean, SD)	P-value	Wash-out (Mean, SD)	P-value
• Part 1 (NMS)	11.5 (6.49)	10.6 (6.08)	0.33	9.5 (5.17)	0.08
• Part 2 (Daily living)	14.9 (7.99)	14.7 (8.88)	0.77	14.1 (8.06)	0.40
• Part 3 (Motor)	35.4 (14.13)	33.6 (15.07)	0.17	30.3 (12.75)	0.006
• Total	64.2 (23.36)	60.8 (25.20)	0.12	55.4 (22.82)	0.0008
MMSE	28.4 (1.72)	28.8 (1.88)	0.17	29.3 (1.05)	0.0004
PDHQ	1.3 (2.95)	1.7 (3.30)	0.45	0.9 (2.29)	0.03
BDI-II	10.9 (7.45)	9.8 (6.84)	0.12	8.6 (5.40)	0.09
UPDRS: Unified Parkinson's Disease Severity Score; NMS: Non-motor symptoms; BDI: Beck Depression Index-II; MMSE: Mini-mental State exam. PDHQ: Parkinson's Disease Hallucination Questionnaire					

Table S7. Pharmacokinetics of orally administered ENT-01 in Stage 1**Stage 1**

Dose (mg)	# of patients	C _{max} (ng/ml)	T _{max} (hour) (Median Value)	T _{1/2} (hours) (n)	AUC _{0-8hr} (ng*hour/ml)	AUC _{0-16hr} (ng*hour/ml)
25	9	2.84	1.0	2.6 (3)	10.8	19.6
50	10	3.73	2.0	3.4 (3)	18.5	33.1
75	9	4.33	2.0	2.8 (2)	18.4	29.8
100	9	6.18	2.0	3.9 (5)	29.6	51.5
125	9	9.63	2.0	3.9 (4)	43.1	77.7
150	7	6.27	2.0	5.6 (4)	31.5	64.0
175	7	10.3	2.0	9.1 (6)	49.7	91.2
200	6	15.1	2.0	9.0 (5)	78.3	157

The mean C_{max}, T_{max} and T_{1/2} and AUC of the squalamine ion following ENT-01 oral dosing for Stage 1 patients. The PK analyses are only approximate, as the lower limit of the validated concentration range was 10 ng/ml; most of the measured concentrations fell below that value.

ROLE OF FUNDING SOURCE:

Enterin funded the conduct of this research and was responsible for the study design, data collection, and analysis with input from investigators/authors as noted. Enterin participated in the interpretation of data, in the writing of the report, and in the decision to submit the article for publication along with investigators/authors as noted.

FINANCIAL DISCLOSURES:

Barbut, Zasloff, Kinney, Harvey, Resnick, Lowry, and Huff are employees of Enterin and hold equity. **Camilleri** is a member of Enterin's Scientific Advisory Board. **Ballmann** is a paid consultant of Enterin. **Hauser** has received consulting fees from Enterin.

Robert Hauser:

Dr. Robert Hauser reports consulting fees from: Enterin, AbbVie Inc., Acorda Therapeutics, Academy for Continued Healthcare Learning, Acadia Pharmaceuticals, Inc., Adamas Pharmaceuticals, AstraZeneca, ApoPharma, Back Bay Life Science, Biotie Therapies, Bracket, Cerecor, Inc., ClearView Healthcare Partners, ClinicalMind Medical and Therapeutic Communications, CNS Ratings, LLC., Cowen and Company, Cynapsus Therapeutics, DDB Health LLC, Decision Resources Group (DRG), Eli Lilly & Company, eResearch Technology, Inc., Expert Connect, Extera Partners, GE Healthcare, Health Advances, HealthLogix, Health and Wellness Partners, Huron Consulting Group, Impax Laboratories, Impel Neuropharma, Intec Pharma Ltd., Jazz Pharmaceuticals, Kashiv Pharma LLC, Kyowa Kirin Pharmaceutical Development, Ltd., LCN Consulting, LifeMax, Life Sciences, Lundbeck LLC, The Lockwood Group, MEDACorp, Medscape, Medtronic, Michael J. Fox Foundation, Mitsubishi Tanabe Pharmaceuticals, Movement Disorder Society, National Institutes of Health (NIH), Neurocea LLC, Neurocrine Biosciences, Neuroderm, Neuropore Therapies, Orbes Medical Group, Outcomes Insights, Parkinson Study Group, Peerview Press, Pennside Partners, Pfizer, Inc., Pharma Two B, Ltd, Phase Five Communications, Prescott Medical Group, Prexton Therapeutics, Prilenia Development Ltd., Projects in Knowledge, Putnam Associates, Quintiles, RMEI Medical Education for Better Outcomes, SAI Med Partners LLC, Sarepta Therapeutics, Schlesinger Associates, Scion Neurostim, LLC, Seagrove Partners, LLC, Seelos, Slingshot Insights, Sunovion Pharmaceuticals, Inc., Sun Pharma, Teva Pharmaceutical Industries, US WorldMeds, Vista Research, WebMD, Windrose Consulting Group. Dr. Hauser reports research support from: AbbVie Inc., Acorda Therapeutics, AstraZeneca, Axovant Sciences, Biogen Inc., Cavion, Enterin Inc., Impax Laboratories, LLC., Intec Pharma Ltd, Jazz Pharmaceuticals, NeuroDerm Ltd., Lundbeck, Michael J Fox Foundation for Parkinson's Research, F. Hoffman-La Roche, Dart NeuroScience LLC, Prexton Therapeutics, Revance Therapeutics Inc., Sunovion Pharmaceuticals Dr. Hauser reports grant support from: Parkinson's Foundation

Stuart Isaacson: Honoraria for CME, consultant, research grants, and/or promotional speaker on behalf of: Abbvie, Acadia, Acorda, Adamas, Addex, Allergan, Amarantus, Axovant, Benevolent, Biogen, Britannia, Cerecor, Eli Lilly, Enterin, GE Healthcare, Global Kinetics, Impax, Intec Pharma, Ipsen, Jazz, Kyowa, Lundbeck, Michael J. Fox Foundation, Neurocrine, Neuroderm,

Parkinson Study Group, Pharma2B, Roche, Sanofi, Sunovion, Teva, Theravance, UCB, US World Meds, Zambon

Aaron Ellenbogen: consulted for Adamas, Allergan, Amneal, Lundbeck, Neuroderm, US World

Maria Angeles Rol and Juan Antonio Madrid:

The authors declare no conflict of interest. JAM and MAR are founding partners of Kronohealth SL (a spin-off company participated also by the University of Murcia).

Mark Lew:

Advisor/consultant- Teva, US World Meds, UCB, Lundbeck, Abbvie, Adamas, Cynapsus, Revance, Acadia, Neurocrine, Acorda; Speaker- Teva, UCB, Lundbeck, Adamas, Acadia, Neurocrine; Research support: Parkinson's Study Group, Michael J. Fox Foundation, Biotie, Neuroderm, Enterin Inc., Pharm2B, Cala Health; Fellowship Grants to Department of Neurology: Allergan, Medtronic

Daniel Kremens: Consultant/Speaker Bureau: UCB, Sunovion, Impax, Lundbeck, Acadia, US WorldMeds, Adamas, Abbvie, Merz, Allergan, Acorda, Kyowa, Neurocrine, GE Healthcare, St Jude Medical, Prexton. Research: Enterin, Revance

Posner, Sutherland, Pagan, Li, Walter, Kumar, Vazquez, Oguh, Frucht, Maddux and Tse have nothing to disclose.

Author Roles

(1) (A) conception and design of the study, (B) acquisition of data, (C) analysis and interpretation of data

(2) (A) drafting the article or (B) revising it critically for important intellectual content

(3) final approval of the version to be submitted

Robert A. Hauser 1A, 1B, 1C, 2A, 3

Dean Sutherland 1B, 2B, 3

Juan A. Madrid 1A, 1B, 1C, 2A, 3

Maria Angeles Rol 1A, 1B, 1C, 2A, 3

Steven Frucht 1B, 2B, 3

Stuart Isaacson 1B, 2B, 3

Fernando Pagan 1B, 2B, 3

Brian N. Maddux 1B, 2B, 3

George Li 1B, 2B, 3

Winona Tse 1B, 2B, 3

Benjamin L. Walter 1B, 2B, 3

Rajeev Kumar 1B, 2B, 3

Daniel Kremens 1B, 2B, 3
Mark F. Lew 1B, 2B, 3
Aaron Ellenbogen 1B, 2B, 3
Odinachi Oguh 1B, 2B, 3
Alberto Vasquez 1B, 2B, 3
William Kinney 1B, 2B, 3
Matt Lowery 1B, 2B, 3
Maria Resnick 1B, 2B, 3
Nicole Huff 1B, 2B, 3
Jerry Posner 1B, 2B, 3
Karla V. Ballman 1B, 2B, 3
Brian E. Harvey 1B, 2B, 3
Michael Camilleri 1A, 1B, 1C, 2A, 3
Michael Zasloff 1A, 1B, 1C, 2A, 3
Denise Barbut 1A, 1B, 1C, 2A, 3

CONFIDENTIAL